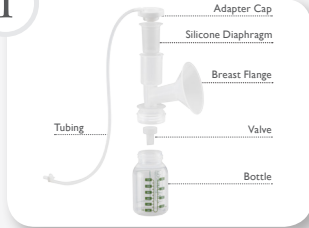


Ameda® Elite™ Breast Pump **QUICK START**

With suggested start-up settings

1



Assemble HygieniKit®.

2



Insert tubing adapter into pump piston.

3



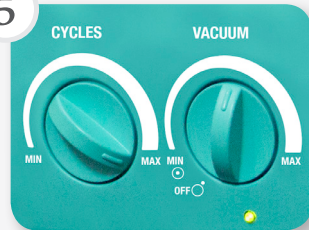
Center flange on breast to create seal.

4



To turn on, turn VACUUM dial to right to highest comfortable setting. Try half-way, adjust as needed.

5



Turn CYCLES dial to right to MAX.

6



Once milk flows, turn CYCLES dial to left to help drain milk. Try half-way, adjust as needed.

7



If milk flow slows, try for another let-down. Turn CYCLES to MAX, then turn to left to slow speed when milk is flowing. Repeat as needed.

8

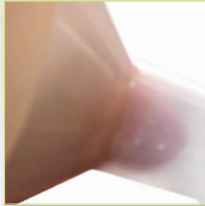


To turn off, turn VACUUM dial to left.

FINDING A GOOD BREAST FLANGE FIT

GOOD FIT -

During pumping, your nipple moves freely in the breast flange tunnel. You see space around the nipple. Not much areola is drawn into the tunnel with the nipple.



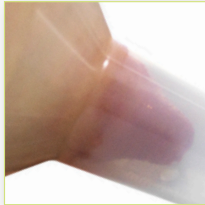
TOO SMALL -

During pumping, some or all of your nipple rubs against the sides of the breast flange tunnel.



TOO LARGE -

During pumping, more areola is drawn into the breast flange with your nipple. Your areola may rub against the side of the breast flange tunnel.



AMEDA® ELITE™ CLEANING INSTRUCTIONS

For At-Home/End-Users:

After each pumping, wipe the pump with clean, damp cloth.

For Hospitals/Rental Stations:

Clean between users. Wearing disposable gloves, wipe the pump with damp disposable cloth, using hospital approved antibacterial cleaner such as CaviCide™.

AMEDA HYGIENIKIT® CLEANING INSTRUCTIONS

- Take apart the Ameda HygieniKit to clean. **Set aside tubing, adapter cap and tubing adapter. These can be wiped with a clean, damp cloth, but should not be washed.**
- Rinse any milk residue from remaining pump parts, flange, diaphragm, valve (and bottle), with cool water.
- Wash these remaining parts with warm, soapy water. Rinse well with warm, clean water.
- Allow parts to air dry on clean towel or drying rack before assembly and next use.
- Cover parts with clean towel if not planning to use again right away.

Breast flanges and bottles can be washed on the upper rack of a standard household dishwasher away from heating elements. Wash diaphragms and valves gently by hand. Do not insert anything through valve while cleaning.

Ameda, Elite, HygieniKit and associated logos are trademarks of Ameda, Inc. Any other trademarks brand or images appearing herein are property of their respective owners and are used herein with expressed or implied permission.

©2014 Ameda, Inc.

26601058-0514